

## 4,4-Dimethyl-1-(3-nitrophenyl)pent-1-en-3-one

Ping Chen,<sup>a</sup> Lin Xia,<sup>b</sup> Ai-Xi Hu<sup>b\*</sup> and Jiao Ye<sup>b</sup>

<sup>a</sup>College of Chemical and Biological Engineering, Changsha University of Science and Technology, 410004 Changsha, People's Republic of China, and <sup>b</sup>College of Chemistry and Chemical Engineering, Hunan University, 410082 Changsha, People's Republic of China

Correspondence e-mail: axhu0731@yahoo.com.cn

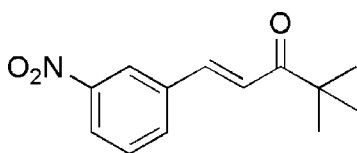
Received 14 May 2009; accepted 15 May 2009

Key indicators: single-crystal X-ray study;  $T = 173$  K; mean  $\sigma(\text{C}-\text{C}) = 0.003$  Å;  $R$  factor = 0.041;  $wR$  factor = 0.123; data-to-parameter ratio = 12.7.

All the non-hydrogen atoms except one methyl C atom of the title compound,  $\text{C}_{13}\text{H}_{15}\text{NO}_3$ , lie on a crystallographic mirror plane perpendicular to the  $b$  axis. The crystal packing is stabilized by two weak intermolecular  $\text{C}-\text{H}\cdots\text{O}$  hydrogen bonds.

### Related literature

The title compound is an important intermediate in the pesticides industry (Wang *et al.*, 2006). For related structures, see: Anuradha *et al.* (2008); Butcher *et al.* (2007); Gong *et al.* (2008); Harrison *et al.* (2007); Patil *et al.* (2007); Sarojini *et al.* (2007); Thiruvalluvar *et al.* (2007, 2008); Xia & Hu (2008).



### Experimental

#### Crystal data

$\text{C}_{13}\text{H}_{15}\text{NO}_3$	$V = 1221.72$ (17) Å <sup>3</sup>
$M_r = 233.26$	$Z = 4$
Orthorhombic, $Pnma$	Mo $K\alpha$ radiation
$a = 11.3375$ (9) Å	$\mu = 0.09$ mm <sup>-1</sup>
$b = 7.2163$ (6) Å	$T = 173$ K
$c = 14.9327$ (12) Å	$0.48 \times 0.36 \times 0.15$ mm

#### Data collection

Bruker SMART 1000 CCD diffractometer	5485 measured reflections
Absorption correction: multi-scan ( <i>SADABS</i> ; Sheldrick, 2004)	1280 independent reflections
$T_{\min} = 0.958$ , $T_{\max} = 0.987$	937 reflections with $I > 2\sigma(I)$
	$R_{\text{int}} = 0.030$

#### Refinement

$R[F^2 > 2\sigma(F^2)] = 0.041$	101 parameters
$wR(F^2) = 0.123$	H-atom parameters constrained
$S = 1.06$	$\Delta\rho_{\text{max}} = 0.26$ e Å <sup>-3</sup>
1280 reflections	$\Delta\rho_{\text{min}} = -0.16$ e Å <sup>-3</sup>

**Table 1**

Hydrogen-bond geometry (Å, °).

$D-\text{H}\cdots A$	$D-\text{H}$	$\text{H}\cdots A$	$D\cdots A$	$D-\text{H}\cdots A$
$\text{C6}-\text{H6A}\cdots\text{O2}^i$	0.98	2.44	3.367 (2)	158
$\text{C10}-\text{H10}\cdots\text{O2}^ii$	0.95	2.50	3.366 (3)	152

Symmetry codes: (i)  $-x + \frac{3}{2}, -y, z + \frac{1}{2}$ ; (ii)  $x - \frac{1}{2}, -y + \frac{1}{2}, -z - \frac{1}{2}$ .

Data collection: *SMART* (Bruker, 2001); cell refinement: *SAINT-Plus* (Bruker, 2003); data reduction: *SAINT-Plus*; program(s) used to solve structure: *SHELXS97* (Sheldrick, 2008); program(s) used to refine structure: *SHELXL97* (Sheldrick, 2008); molecular graphics: *SHELXTL* (Sheldrick, 2008); software used to prepare material for publication: *SHELXTL*.

The authors express their thanks to the National Key Technology R&D Program (No. 2006BAE01A01-4).

Supplementary data and figures for this paper are available from the IUCr electronic archives (Reference: BT2958).

### References

- Anuradha, N., Thiruvalluvar, A., Mahalinga, M. & Butcher, R. J. (2008). *Acta Cryst. E* **64**, o2118–o2119.
- Bruker (2001). *SMART*. Bruker AXS Inc., Madison, Wisconsin, USA.
- Bruker (2003). *SAINT-Plus*. Bruker AXS Inc., Madison, Wisconsin, USA.
- Butcher, R. J., Yathirajan, H. S., Narayana, B., Mithun, A. & Sarojini, B. K. (2007). *Acta Cryst. E* **63**, o30–o32.
- Gong, Z.-Q., Liu, G.-S. & Xia, H.-Y. (2008). *Acta Cryst. E* **64**, o151.
- Harrison, W. T. A., Ravindra, H. J., Kumar, M. R. S. & Dharmaprasanth, S. M. (2007). *Acta Cryst. E* **63**, o4675.
- Patil, P. S., Chantrapromma, S., Fun, H.-K. & Dharmaprasanth, S. M. (2007). *Acta Cryst. E* **63**, o1738–o1740.
- Sarojini, B. K., Yathirajan, H. S., Mustafa, K., Sarfraz, H. & Bolte, M. (2007). *Acta Cryst. E* **63**, o4448.
- Sheldrick, G. M. (2004). *SADABS*. University of Göttingen, Germany.
- Sheldrick, G. M. (2008). *Acta Cryst. A* **64**, 112–122.
- Thiruvalluvar, A., Subramanyam, M., Butcher, R. J., Adhikari, A. V. & Karabasanagouda, T. (2007). *Acta Cryst. E* **63**, o4716.
- Thiruvalluvar, A., Subramanyam, M., Butcher, R. J., Karabasanagouda, T. & Adhikari, A. V. (2008). *Acta Cryst. E* **64**, o1263.
- Wang, Y., Hu, A.-X., Chen, P., Chen, M. & Liu, Zh.-L. (2006). *Agrochemicals*, **45**, 397–398.
- Xia, L. & Hu, A.-X. (2008). *Acta Cryst. E* **64**, o1983.

**supplementary materials**

*Acta Cryst.* (2009). E65, o1346 [ doi:10.1107/S1600536809018479 ]

## 4,4-Dimethyl-1-(3-nitrophenyl)pent-1-en-3-one

P. Chen, L. Xia, A.-X. Hu and J. Ye

### Comment

The title compound, 1-(3-nitrophenyl)-4,4-dimethylpentan-3-one, is a very important intermediate in the pesticides industry (Wang *et al.*, 2006). Continuing our work (Xia & Hu, 2008), we report the synthesis and crystal structure of the title compound. Several crystal structures containing phenylprop-2-en-1-one moiety have been recently published (Anuradha *et al.*, 2008; Butcher *et al.*, 2007; Gong *et al.*, 2008; Harrison *et al.*, 2007; Patil *et al.*, 2007; Sarojini *et al.*, 2007; Thiruvalluvar *et al.*, 2007, 2008; Xia & Hu, 2008). In the title compound (Fig. 1), the carbonyl, ethenyl and nitro groups are coplanar with the benzene ring. The bond lengths and bond angles in (I) are in excellent agreement with the corresponding bond lengths and angles reported in the related compounds given above. The crystal packing is illustrated in Fig. 2.

### Experimental

3,3-dimethylbutan-2-one (0.0105 mol) was added dropwise into the solution of 3-nitrobenzaldehyde (0.01 mol) and 60 ml ethanol. Then 0.1 g 50% NaOH solution as catalyzer was added and the solution was stirred at 333 K for 5 h (monitored by TLC). Part of the solvent was evaporated and the solution was cooled to 277 K and a precipitate formed. It was filtered and dried. Crystals suitable for X-ray structure determination were obtained by slow evaporation of an ethanol solution at room temperature.

### Refinement

H atoms were positioned geometrically ( $C-H = 0.95$  or  $C_{\text{methyl}}-H = 0.98$  Å) with  $U_{\text{iso}}(H) = 1.2U_{\text{eq}}(C)$  or  $1.5U_{\text{eq}}(C_{\text{methyl}})$ . The methyl group on a general position was allowed to rotate but not to tip.

### Figures

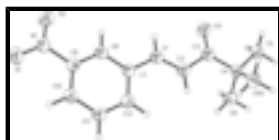


Fig. 1. Molecular structure of the title compound, showing 30% probability displacement ellipsoids.



Fig. 2. Packing diagram of the title compound.

## 4,4-Dimethyl-1-(3-nitrophenyl)pent-1-en-3-one

### Crystal data

$C_{13}H_{15}NO_3$

$D_x = 1.268 \text{ Mg m}^{-3}$

# supplementary materials

---

$M_r = 233.26$

Orthorhombic,  $Pnma$

Hall symbol: -P 2ac 2n

$a = 11.3375$  (9) Å

$b = 7.2163$  (6) Å

$c = 14.9327$  (12) Å

$V = 1221.72$  (17) Å<sup>3</sup>

$Z = 4$

$F_{000} = 496$

Melting point: 363 K

Mo  $K\alpha$  radiation

$\lambda = 0.71073$  Å

Cell parameters from 1920 reflections

$\theta = 2.3$ – $27.7^\circ$

$\mu = 0.09$  mm<sup>-1</sup>

$T = 173$  K

Block, colourless

$0.48 \times 0.36 \times 0.15$  mm

## Data collection

Bruker SMART 1000 CCD  
diffractometer

Radiation source: fine-focus sealed tube

Monochromator: graphite

$T = 173$  K

$\omega$  scans

Absorption correction: multi-scan  
(SADABS; Sheldrick, 2004)

$T_{\min} = 0.958$ ,  $T_{\max} = 0.987$

5485 measured reflections

1280 independent reflections

937 reflections with  $I > 2\sigma(I)$

$R_{\text{int}} = 0.030$

$\theta_{\text{max}} = 26.0^\circ$

$\theta_{\text{min}} = 2.3^\circ$

$h = -13 \rightarrow 12$

$k = -3 \rightarrow 8$

$l = -18 \rightarrow 17$

## Refinement

Refinement on  $F^2$

Least-squares matrix: full

$R[F^2 > 2\sigma(F^2)] = 0.041$

$wR(F^2) = 0.123$

$S = 1.06$

1280 reflections

101 parameters

Primary atom site location: structure-invariant direct  
methods

Secondary atom site location: difference Fourier map

Hydrogen site location: inferred from neighbouring  
sites

H-atom parameters constrained

$$w = 1/[\sigma^2(F_o^2) + (0.0591P)^2 + 0.3634P]$$

where  $P = (F_o^2 + 2F_c^2)/3$

$(\Delta/\sigma)_{\text{max}} = 0.001$

$\Delta\rho_{\text{max}} = 0.26$  e Å<sup>-3</sup>

$\Delta\rho_{\text{min}} = -0.16$  e Å<sup>-3</sup>

Extinction correction: none

## Special details

**Geometry.** All e.s.d.'s (except the e.s.d. in the dihedral angle between two l.s. planes) are estimated using the full covariance matrix. The cell e.s.d.'s are taken into account individually in the estimation of e.s.d.'s in distances, angles and torsion angles; correlations between e.s.d.'s in cell parameters are only used when they are defined by crystal symmetry. An approximate (isotropic) treatment of cell e.s.d.'s is used for estimating e.s.d.'s involving l.s. planes.

**Refinement.** Refinement of  $F^2$  against ALL reflections. The weighted  $R$ -factor  $wR$  and goodness of fit  $S$  are based on  $F^2$ , conventional  $R$ -factors  $R$  are based on  $F$ , with  $F$  set to zero for negative  $F^2$ . The threshold expression of  $F^2 > \sigma(F^2)$  is used only for calculating  $R$ -

factors(gt) *etc.* and is not relevant to the choice of reflections for refinement. *R*-factors based on  $F^2$  are statistically about twice as large as those based on  $F$ , and *R*- factors based on ALL data will be even larger.

Fractional atomic coordinates and isotropic or equivalent isotropic displacement parameters ( $\text{\AA}^2$ )

	<i>x</i>	<i>y</i>	<i>z</i>	$U_{\text{iso}}^*/U_{\text{eq}}$	Occ. (<1)
C1	0.64133 (19)	0.2500	0.12364 (15)	0.0363 (6)	
H1	0.7249	0.2500	0.1281	0.044*	
C2	0.5825 (2)	0.2500	0.19956 (15)	0.0371 (6)	
H2	0.4987	0.2500	0.1983	0.045*	
C3	0.6446 (2)	0.2500	0.28774 (15)	0.0367 (6)	
C4	0.56797 (18)	0.2500	0.37208 (15)	0.0317 (5)	
C5	0.6474 (2)	0.2500	0.45437 (16)	0.0392 (6)	
H5A	0.5987	0.2500	0.5086	0.059*	
H5B	0.6973	0.3609	0.4537	0.059*	0.50
H5C	0.6973	0.1391	0.4537	0.059*	0.50
C6	0.48919 (15)	0.0777 (3)	0.37212 (12)	0.0419 (5)	
H6A	0.5385	-0.0338	0.3701	0.063*	
H6B	0.4374	0.0803	0.3196	0.063*	
H6C	0.4412	0.0761	0.4267	0.063*	
C7	0.59173 (19)	0.2500	0.03248 (15)	0.0310 (5)	
C8	0.66910 (19)	0.2500	-0.03967 (15)	0.0313 (5)	
H8	0.7519	0.2500	-0.0299	0.038*	
C9	0.62418 (18)	0.2500	-0.12592 (14)	0.0296 (5)	
C10	0.5051 (2)	0.2500	-0.14355 (15)	0.0348 (6)	
H10	0.4764	0.2500	-0.2033	0.042*	
C11	0.42813 (19)	0.2500	-0.07129 (16)	0.0381 (6)	
H11	0.3454	0.2500	-0.0814	0.046*	
C12	0.47098 (19)	0.2500	0.01538 (15)	0.0363 (6)	
H12	0.4171	0.2500	0.0641	0.044*	
N1	0.70773 (17)	0.2500	-0.20150 (12)	0.0359 (5)	
O1	0.66864 (16)	0.2500	-0.27777 (11)	0.0501 (5)	
O2	0.81309 (15)	0.2500	-0.18457 (12)	0.0570 (6)	
O3	0.75145 (14)	0.2500	0.29171 (11)	0.0559 (6)	

Atomic displacement parameters ( $\text{\AA}^2$ )

	$U^{11}$	$U^{22}$	$U^{33}$	$U^{12}$	$U^{13}$	$U^{23}$
C1	0.0277 (11)	0.0469 (15)	0.0344 (13)	0.000	-0.0032 (9)	0.000
C2	0.0283 (11)	0.0495 (15)	0.0337 (13)	0.000	-0.0012 (9)	0.000
C3	0.0319 (12)	0.0453 (15)	0.0328 (13)	0.000	-0.0006 (9)	0.000
C4	0.0315 (11)	0.0347 (13)	0.0290 (12)	0.000	-0.0002 (9)	0.000
C5	0.0373 (12)	0.0471 (15)	0.0333 (13)	0.000	-0.0019 (10)	0.000
C6	0.0415 (9)	0.0424 (10)	0.0418 (10)	-0.0048 (8)	0.0023 (7)	0.0001 (8)
C7	0.0304 (11)	0.0317 (13)	0.0310 (12)	0.000	-0.0015 (9)	0.000
C8	0.0265 (10)	0.0332 (13)	0.0340 (13)	0.000	-0.0030 (9)	0.000
C9	0.0312 (11)	0.0281 (12)	0.0297 (12)	0.000	0.0014 (9)	0.000
C10	0.0352 (12)	0.0387 (14)	0.0306 (12)	0.000	-0.0043 (9)	0.000

## supplementary materials

---

C11	0.0279 (11)	0.0494 (15)	0.0372 (13)	0.000	-0.0014 (9)	0.000
C12	0.0321 (12)	0.0447 (14)	0.0322 (13)	0.000	0.0006 (9)	0.000
N1	0.0355 (11)	0.0405 (12)	0.0316 (12)	0.000	0.0020 (8)	0.000
O1	0.0501 (10)	0.0725 (14)	0.0278 (10)	0.000	-0.0010 (8)	0.000
O2	0.0322 (9)	0.0955 (16)	0.0434 (11)	0.000	0.0058 (8)	0.000
O3	0.0300 (10)	0.1027 (17)	0.0350 (10)	0.000	-0.0011 (7)	0.000

### Geometric parameters ( $\text{\AA}$ , $^\circ$ )

C1—C2	1.315 (3)	C6—H6C	0.9800
C1—C7	1.473 (3)	C7—C8	1.389 (3)
C1—H1	0.9500	C7—C12	1.393 (3)
C2—C3	1.493 (3)	C8—C9	1.385 (3)
C2—H2	0.9500	C8—H8	0.9500
C3—O3	1.213 (3)	C9—C10	1.376 (3)
C3—C4	1.530 (3)	C9—N1	1.474 (3)
C4—C5	1.523 (3)	C10—C11	1.388 (3)
C4—C6	1.531 (2)	C10—H10	0.9500
C4—C6 <sup>i</sup>	1.531 (2)	C11—C12	1.382 (3)
C5—H5A	0.9800	C11—H11	0.9500
C5—H5B	0.9800	C12—H12	0.9500
C5—H5C	0.9800	N1—O2	1.221 (2)
C6—H6A	0.9800	N1—O1	1.222 (2)
C6—H6B	0.9800		
C2—C1—C7	127.1 (2)	C4—C6—H6C	109.5
C2—C1—H1	116.5	H6A—C6—H6C	109.5
C7—C1—H1	116.5	H6B—C6—H6C	109.5
C1—C2—C3	121.4 (2)	C8—C7—C12	118.6 (2)
C1—C2—H2	119.3	C8—C7—C1	118.40 (19)
C3—C2—H2	119.3	C12—C7—C1	123.0 (2)
O3—C3—C2	120.9 (2)	C9—C8—C7	119.27 (19)
O3—C3—C4	121.8 (2)	C9—C8—H8	120.4
C2—C3—C4	117.30 (19)	C7—C8—H8	120.4
C5—C4—C3	109.19 (18)	C10—C9—C8	122.6 (2)
C5—C4—C6	110.15 (12)	C10—C9—N1	118.97 (19)
C3—C4—C6	109.36 (12)	C8—C9—N1	118.42 (18)
C5—C4—C6 <sup>i</sup>	110.15 (12)	C9—C10—C11	117.9 (2)
C3—C4—C6 <sup>i</sup>	109.36 (12)	C9—C10—H10	121.0
C6—C4—C6 <sup>i</sup>	108.63 (18)	C11—C10—H10	121.0
C4—C5—H5A	109.5	C12—C11—C10	120.5 (2)
C4—C5—H5B	109.5	C12—C11—H11	119.8
H5A—C5—H5B	109.5	C10—C11—H11	119.8
C4—C5—H5C	109.5	C11—C12—C7	121.1 (2)
H5A—C5—H5C	109.5	C11—C12—H12	119.4
H5B—C5—H5C	109.5	C7—C12—H12	119.4
C4—C6—H6A	109.5	O2—N1—O1	123.22 (19)
C4—C6—H6B	109.5	O2—N1—C9	118.06 (18)
H6A—C6—H6B	109.5	O1—N1—C9	118.73 (18)

C7—C1—C2—C3	180.0	C7—C8—C9—C10	0.0
C1—C2—C3—O3	0.0	C7—C8—C9—N1	180.0
C1—C2—C3—C4	180.0	C8—C9—C10—C11	0.0
O3—C3—C4—C5	0.0	N1—C9—C10—C11	180.0
C2—C3—C4—C5	180.0	C9—C10—C11—C12	0.0
O3—C3—C4—C6	-120.58 (12)	C10—C11—C12—C7	0.0
C2—C3—C4—C6	59.42 (12)	C8—C7—C12—C11	0.0
O3—C3—C4—C6 <sup>i</sup>	120.58 (12)	C1—C7—C12—C11	180.0
C2—C3—C4—C6 <sup>i</sup>	-59.42 (12)	C10—C9—N1—O2	180.0
C2—C1—C7—C8	180.0	C8—C9—N1—O2	0.0
C2—C1—C7—C12	0.0	C10—C9—N1—O1	0.0
C12—C7—C8—C9	0.0	C8—C9—N1—O1	180.0
C1—C7—C8—C9	180.0		

Symmetry codes: (i)  $x, -y+1/2, z$ .

*Hydrogen-bond geometry* ( $\text{\AA}, ^\circ$ )

$D-H\cdots A$	$D-H$	$H\cdots A$	$D\cdots A$	$D-H\cdots A$
C6—H6A $\cdots$ O2 <sup>ii</sup>	0.98	2.44	3.367 (2)	158
C10—H10 $\cdots$ O2 <sup>iii</sup>	0.95	2.50	3.366 (3)	152

Symmetry codes: (ii)  $-x+3/2, -y, z+1/2$ ; (iii)  $x-1/2, -y+1/2, -z-1/2$ .

Fig. 1

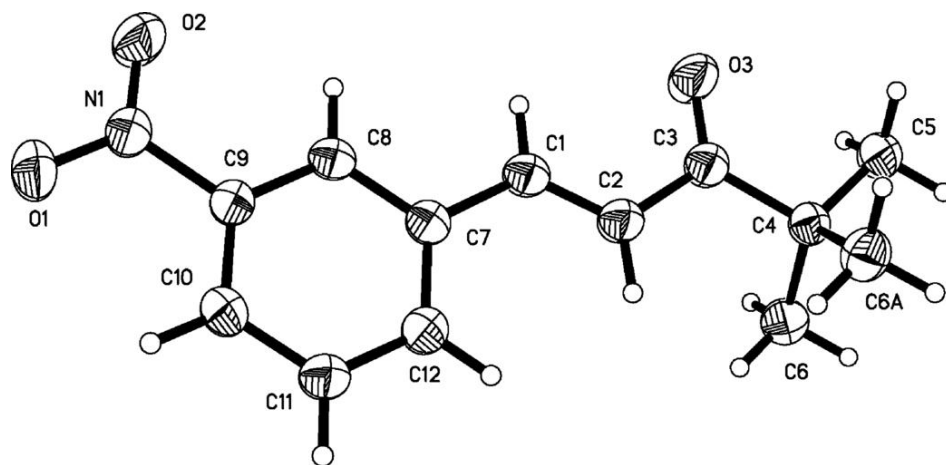




Fig. 2

